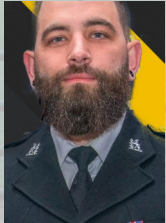


Southam Safer Neighbourhood Team Newsletter September 2025



The team covers Chesterton, Ashorne Hill, Harbury, Ladbroke, Watgall, Fenny Compton, Avon Dassett, Farnborough, Priors Hardwick, Priors Marston, Lower Radbourne, Marston Doles, Long Itchington, Bishops Itchington, Bascote, Stockton, Ufton, Napton, Upper and Lower Shuckburgh and Wormleighton.



**Sgt Charlie
Thompson
(2299)**



**PC Hannah
Rankin (2272)**



**PCSO Naomi
Sutton (6355)**



**PCSO Sarah
Bailey (6118)**

How to get in touch:



SNTSoutham@warwickshire.police.uk



[Southam Police](#)



[@SouthamCops](#)



Warwickshire Connected is a free messaging service brought to you by Warwickshire Police where you decide when and how you hear about the issues that matter most to you, whether that be getting regular crime updates, the latest information on ongoing incidents and emergencies or learning more about what your local police are doing. Sign up here: <https://www.warwickshireconnected.com>

SOUTHAM

WK-20250606-0215 - VEHICLE CRIME – Number plates stolen
WK-20250606-0430 - SUSPICIOUS CIRCUMSTANCES – Threat of blackmail
WK-20250607-0137 - BURGLARY BUSINESS – Premises broken into causing extensive damage and theft of tools
WK-20250616-0333 - VIOLENCE -Young male assaulted by a group of youths wearing balaclavas, smell of cannabis present
WK-20250616-0367 - ASB-NUISANCE - Caller reported location used by children for smoking drugs and using vapes
WK-20250623-0410 - SUSPICIOUS CIRCUMSTANCES - Fake social media accounts/posts created in the name of the caller's daughter.
WK-20250625-0485 - VIOLENCE – Road rage incident, resulting in threats of violence
WK-20250626-0453 - BURGLARY - Theft of supercar
WK-20250707-0136 - SUSPICIOUS CIRCUMSTANCES - Report of woman photographing through property windows
WK-20250717-0107 - BURGLARY - Failed car key burglary
WK-20250719-0074 - DAMAGE – Property damage caused by a group of teenagers
LONG ITCHINGTON
WK-20250613-0392 - ASB-NUISANCE – Known shoplifters refused to leave when asked.
WK-20250614-0167 - ASB-ENVIRONMENTAL – Concern regarding child safety, child climbing on scaffolding and refusing to get down

WK-20250617-0075 - VIOLENCE – Threats of violence made when owner of a van was asked to move it
WK-20250704-0355 - VIOLENCE - Male attacked by youth and injured
WK-20250719-0273 - SUSPICIOUS CIRCUMSTANCES – Suspected drug dealing
WK-20250729-0119 – COURISING - Trespass and Hare coursing
BISHOPS ITCHINGTON
WK-20250615-0332 - ASB-PERSONAL - Dog walker assaulted in nature reserve by male on mini moped
WK-20250617-0042 - BURG NON-DOMESTIC - Garage adjacent to caller's property broken into causing damage
NAPTON
WK-20250615-0182 - ASB-NUISANCE – Motorbikes and quad bikes trespassing on private land
WK-20250703-0471 - SUSPICIOUS CIRCUMSTANCES - Smell of cannabis
WK-20250713-0324 - THEFT OTHER - Theft of number plates
HARBURY
WK-20250615-0307 - RURAL VIOLENCE - Ambulance crew requested help with violent patient
WK-20250706-0384 - TRESPASS - Trespassing on farmland with intent to camp
WK-20250709-0038 - SUSPICIOUS CIRCUMSTANCES - Youths reported for being careless with fire in tinder-box conditions
WK-20250725-0309 - ASB-NUISANCE – Anti-social behaviour by youth on dirt bike
WK-20250731-0463 - SUSPICIOUS CIRCUMSTANCES - Attempted break in

LADBROKE

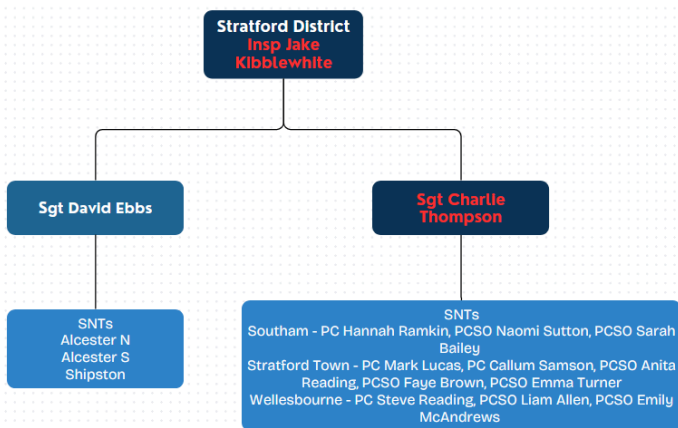
WK-20250721-0058 - BURGLARY NON-DOMESTIC - Theft of tools from garage
FENNY COMPTON
WK-20250608-0317 - SUSPICIOUS CIRCUMSTANCES – Suspected drug dealing
UPPER LIGHTHORNE
WK-20250629-0094 - SUSPICIOUS CIRCUMSTANCES – Suspected drug dealing
WK-20250712-0422 - SUSPICIOUS CIRCUMSTANCES – Group of young people involved in a bullying incident
PRIORS MARSTON
WK-20250716-0388 - SUSPICIOUS CIRCUMSTANCES - Report of suspected drunk driver
AVON DASSETT
WK-20250718-0433 - SUSPICIOUS CIRCUMSTANCES – Vehicle hit by suspected drink/drug driver
WK-20250723-0331 - THEFT OTHER - Theft of farm trailer
WK-20250731-0350 - BURGLARY DOMESTIC - Theft of solar panel and other wiring from an unoccupied property

**PLEASE REPORT ALL
INCIDENTS**

**999
FOR A CRIME IN PROGRESS
OR WHERE A LIFE MAY BE IN DANGER**

**101/ONLINE
FOR ANYTHING ELSE**

Changes to the Stratford District Safer Neighbourhood Teams



Southam SNT Engagement Visits

Coming to a village near you. See below:

Day	Village 1 (1 hour)	Village 2 (1 hour)
Wed 24 th Sept	Napton - 15:00-16:00 Outside The Village Stores	
Thurs 25 th Sept	Long Itchington - 15:00-16:00 The Green Man Pub Carpark	Stockton - 18:00-19:00 The Crown Inn Pub Carpark
Thurs 2 nd Oct	Southam Town - 15:00-16:00 The Grange Carpark	Flying Fields - 18:00-19:00 Community Centre Car Park
Fri 3 rd Oct	Avon Dassett - 15:00-16:00 The Yew Tree Pub Roadside	Farnborough - 18:00-19:00 Village Hall Car Park
Sat 11 th Oct	Harbury - 10:00-11:00 Harbury Village Hall Carpark	Bishops Itchington - 14:00-15:00 The Butchers Arms Car Park
Sun 12 th Oct	Fenny Compton - 15:00-16:00 Memorial Road, Outside the Village Hall	Ladbroke - 18:00-19:00 Outside the Village Hall

Your Mobile Police Engagement Surgery - We're coming to you to listen and help...

For future dates / venues please sign up to

[Warwickshire Connected](#)

a free messaging service brought to you by Warwickshire Police. Use it to tell us your priorities, find out what we're doing to tackle them and be the first to hear the facts about any incidents and emergencies near you.

BURGLARY

SO IT CAN'T HAPPEN TO YOU?

A recent case was prevented only because the burglar bumped into the home owner and his dog in broad daylight. Opportunistic burglars take advantage of easy access, so always keep doors and windows closed and locked, even if you're just popping out or in another room. Be mindful of items like ladders or wheelie bins that can provide access to higher windows, and always keep valuables out of sight of windows

SAY NO TO ANTISOCIAL BEHAVIOUR



Neighbourhood Watch Network is a charity registered in England & Wales, CIO no: 1173349

Antisocial behaviour and what you can do about it

Antisocial behaviour is behaviour that causes harassment, alarm or distress to other people.

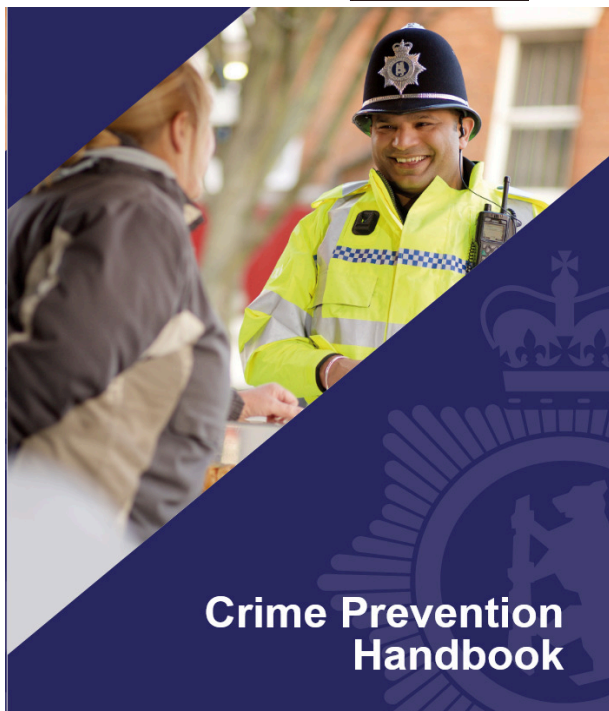
It can include both criminal and non-criminal behaviour, for example: noisy neighbours, vandalism, graffiti, fly-tipping and littering, discarding syringes or needles, threatening, harassing or inconsiderate behaviour

To report ASB go to warwickshire.police.uk/ and click on



Documenting the behaviour in a diary with dates, times, and details can help agencies investigate

See also asbhelp.co.uk



Keep yourself SAFE

Download the [WP Crime Prevention Handbook](#) for advice on:

- Neighbourhood Watch, Victim Support and Safe in Warwickshire 4
- Burglary prevention advice 5
- Home security advice and vehicle security advice 6-9
- Garden security advice 10-12
- Rural crime advice 13
- Property marking advice 14-15
- Bike Register 16
- Bogus callers advice 17
- Fraud advice 18
- Cyber crime advice 19
- County Lines guidance 20
- Hate crime advice 21
- Domestic abuse guidance 22
- How to contact WP 23



Use this QR or short code to share / save this newsletter (with links)

bit.ly/SSNT0925

This newsletter is intended to highlight local crime trends and inform on ways to keep yourself safe. Staying vigilant and working together with the police and your local community can help to keep crime out of your area. KH ^7805.